

wineo

DESIGN FLOORING

**CONFIDENT IN STYLE.
LIVING AND WORKING.**

CONTENTS

Product advantages	06
Application areas	08
Product composition	10
Formats	14
Surfaces	16

Collections

ambra	18
wineo 600	26
wineo 800	38

Accessories	56
Service	58
Quality	60

Collection overview	62
Symbols	65

wineo 800 **CONFIDENT IN STYLE.** **MAKING AN IMPACT.**

Inspired by global trends, wineo 800 comes in attractive wood and stone designs, as well as unique tiles in a variety of formats. The collection is rounded off by creative craft elements such as mosaic and slim planks. The highlight of the collection is that many different colours and formats can be combined, offering limitless opportunities for individual design!

NEW!



CONFIDENT IN STYLE.

Where do we find inspiration? Where can we feel the spirit of the times? Our designers were looking for the latest trends – with the aim of creating extraordinary collections that are characterised in particular: by confidence in style.

The design flooring by wineo gives every room a special flair. It derives its inspiration from the warmth of nature or the cool concrete façades of fascinating cities. It convinces with design and functionality for residential and commercial buildings.



PRODUCT ADVANTAGES

Permanently elastic wineo design flooring is impressively functional. Offering numerous product advantages and easy to use, it is a true favourite.



DURABLE

wineo design flooring is **resistant to staining**. Even furniture and chair castors leave no trace.



EASY CARE

The sealed surface makes the design flooring ridiculously **easy to clean**.



QUIET

The soft surface ensures pleasantly **quiet acoustics**.



WARM TO THE FEET

The design flooring feels **pleasantly warm** and is perfect for lounging, playing and living.



SUITABLE FOR UNDERFLOOR HEATING

Installed over underfloor heating, the design flooring provides **additional warmth**.



SUITABLE FOR DAMP AREAS

All wineo design flooring for gluing and clicking in is ideal for damp areas, such as kitchens or bathrooms, as **it does not swell on contact with water**.



GENTLE ON THE ANKLES

The **elastic surface** is gentle on the joints.



NON-SLIP

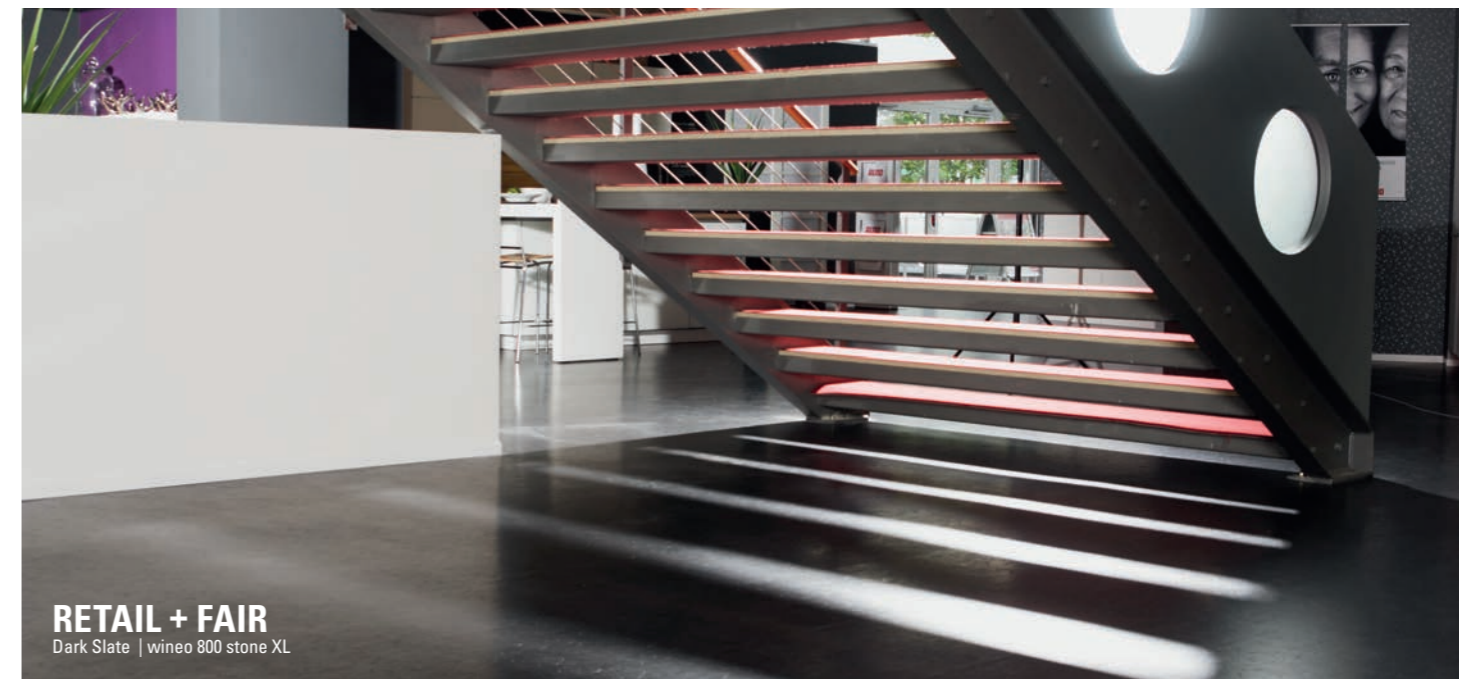
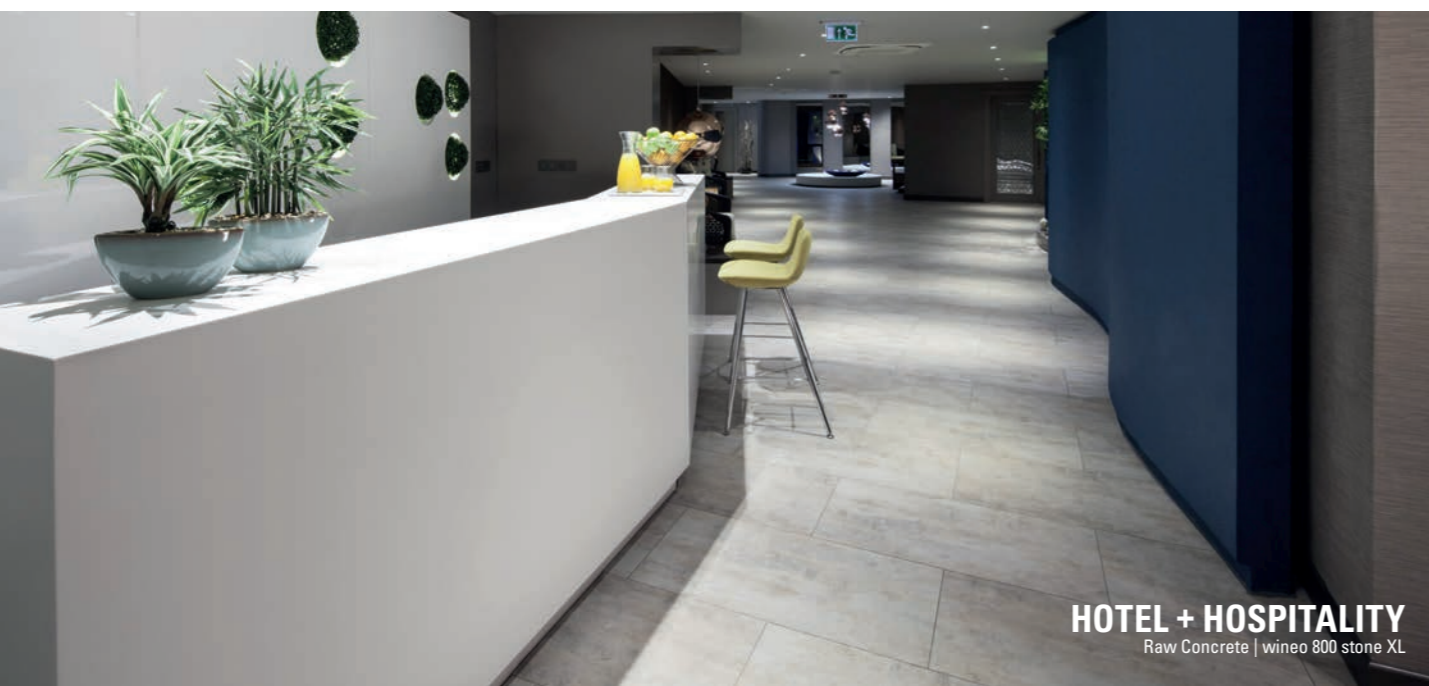
The **tested surface** ensures safety with every step.

APPLICATION AREAS

The wineo design flooring for gluing and clicking in, with utilization classes of between 23 and 42, is always the right choice – for domestic areas as much as for public authorities or light industrial sector. Product thicknesses of 2 mm to 9 mm make it possible to instal the design floor on virtually any technically adequate subsurface.

i

All wineo design flooring is ideal for damp areas.





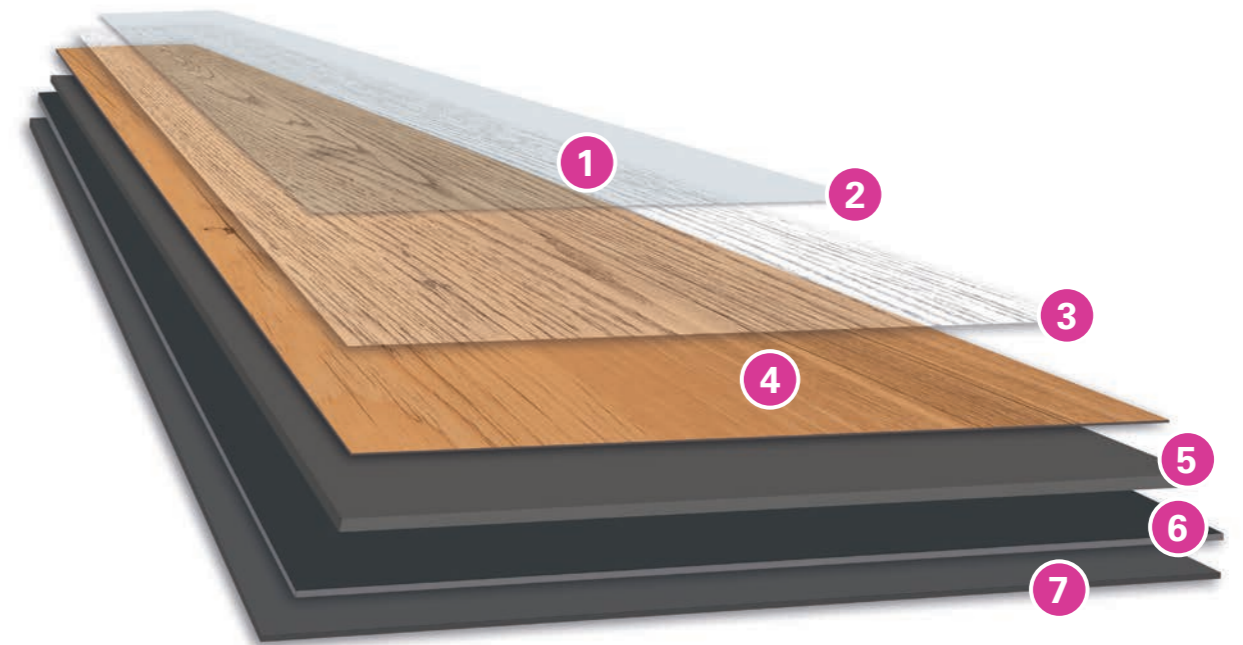
PRODUCT COMPOSITION

Design flooring from wineo is just as varied as your requirements. Whether you are looking for flooring for a new building, renovation, private or for commercial use – wineo has the right product for you.

DESIGN FLOORING FOR GLUING



- very elastic
- minimal thickness of 2 mm to 2.5 mm
- particularly durable and long-lasting
- ideal for refurbishment work and damp areas

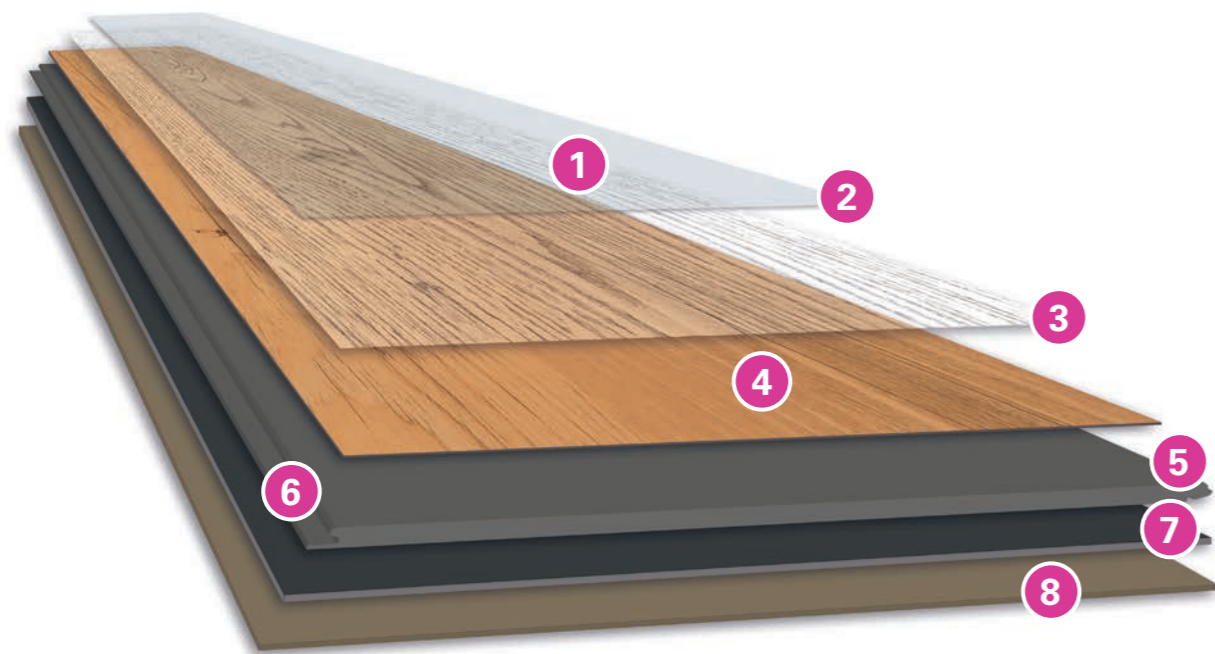


- 1 Surface seal**
Protects the product and enables easy cleaning and maintenance.
- 2 Surface texture**
A range of surface textures ensure an authentic feel and appearance.
- 3 Wear layer**
Guarantees a high level of durability and is the basis for categorising flooring into the respective application areas.
- 4 Design**
The decor film offers a host of design options.
- 5 Base layer**
Lends the product a high level of dimensional stability and optimum point-load resistance.
- 6 Backing**
With its waffle back texture, it is used to help ensure balance and optimal installation.
- 7 Insulation mat**
Available separately: the silentPREMIUM self-adhesive insulation mat for bridging any unevenness and reducing footfall noise levels.

DESIGN FLOORING FOR CLICKING IN



- very elastic
- available in a thickness of 4.5 mm to 5 mm
- connect locking for particularly quick and tidy installation



1 Surface seal

Protects the product and enables easy cleaning and maintenance.

2 Surface texture

A range of surface textures ensure an authentic feel and appearance.

3 Wear layer

Guarantees a high level of durability and is the basis for categorising flooring into the respective application areas.

4 Design

The decor film offers a host of design options.

5 Base layer with glass fibre reinforcement

Lends the product an especially high level of dimensional stability and optimum point-load resistance.

6 Profile connection

The Connect locking system was specially developed for elastic design flooring and enables planks to be Clicked into each other without any problems.

7 Backing

With its waffle back texture, it is used to help ensure balance and optimal installation.

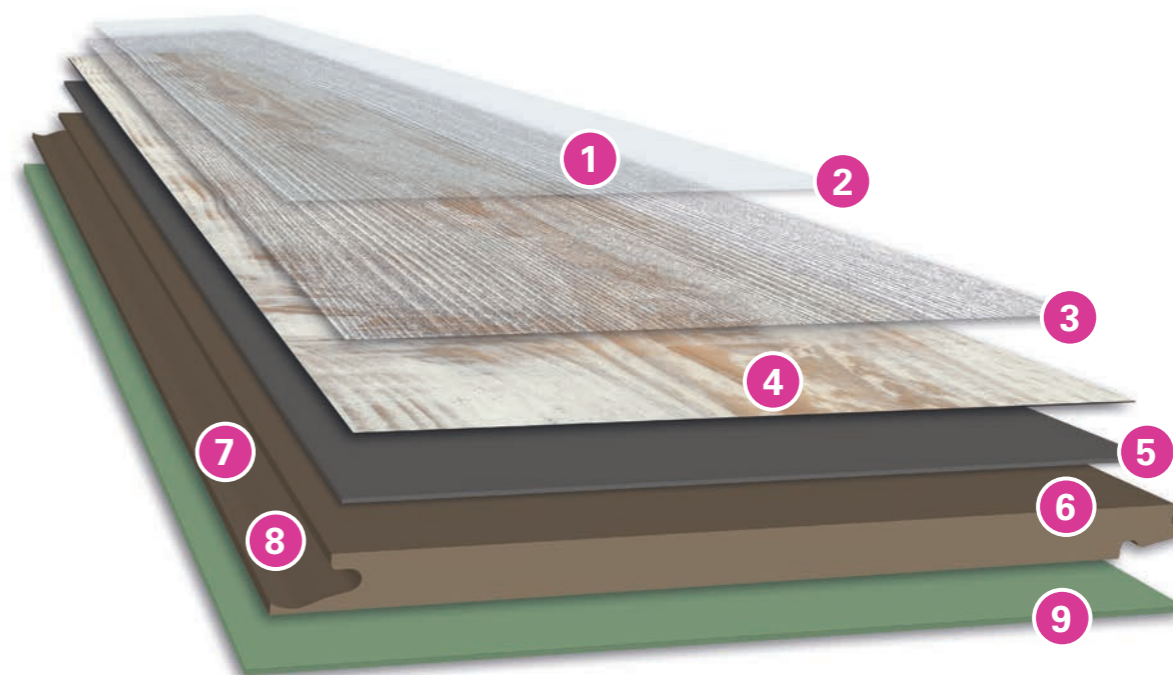
8 Insulation mat

Available separately: the silentCOMFORT insulation mat with non-slip effect for bridging any unevenness and reducing footfall noise levels.

MULTI-LAYER DESIGN FLOORING FOR CLICKING IN



- Design flooring surface on Aqua-Protect® HDF core board
- 9 mm thick for optimally bridging any unevenness in the substrate
- ideal for refurbishment work and damp areas
- particularly heat-resistant and dimensionally stable
- integrated Sound-Protect insulation mat for reducing footfall sound
- LocTec® locking for easy installation



1 Surface seal

Protects the product and enables easy cleaning and maintenance.

2 Surface texture

A range of surface textures ensure an authentic feel and appearance.

3 Wear layer

Guarantees a high level of durability and is the basis for categorising flooring into the respective application areas.

4 Design

The decor film offers a host of design options.

5 Base layer

Lends the product a high level of dimensional stability and optimum point-load resistance.

6 Core board

The HDF Aqua-Protect® core board is swell-resistant.

7 Profile connection

Thanks to the tried-and-tested LocTec® locking system from Unilin®, panels can be Clicked into each other without any problems.

8 Profile seal

A special profile seal protects the entire connection system from moisture.







9 Insulation mat

The footfall-sound-reducing system Sound-Protect Eco is already securely integrated into wineo Multi-Layer flooring.

FORMATS





To help ensure the optimum effect of each decor, there are different formats, such as a generously dimensioned XL planks in a rustic style and handy tile formats – for an all-round stylish design.

ambra



wood		stone	
	Glue 1200 × 180 mm		Glue 609,6 × 304,8 mm
	Click 1212 × 185 mm		Click 600 × 314 mm
	Multi-Layer 1200 × 212 mm		Multi-Layer 591 × 287 mm

wineo 600

wood		stone	
	Glue 1200 × 180 mm		Glue 609,6 × 304,8 mm
	Click 1212 × 187 mm <small>DLC00011: 1212 × 185 mm</small>		Click 600 × 317 mm

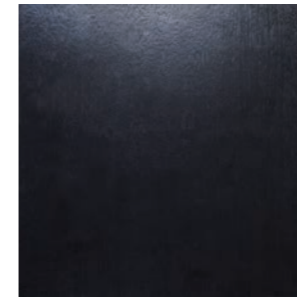
wood XL		stone XL	
	Glue 1505 × 235 mm		Glue 900 × 450 mm
	Click 1505 × 237 mm		Click 914 × 480 mm

wineo 800

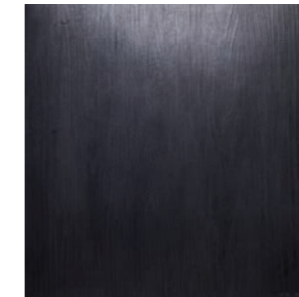
wood		tile	
	Glue 1200 × 180 mm		Glue L 457,2 × 457,2 mm
	Click 1212 × 185 mm		Glue XL 914,4 × 457,2 mm
	Glue 1505 × 235 mm		Glue XXL 914,4 × 914,4 mm
	Click 1505 × 237 mm		Glue stone 914,4 × 457,2 mm
	Click 914 × 480 mm		Glue craft 457,2 × 457,2 mm
			Glue 914,4 × 101,6 mm

SURFACES

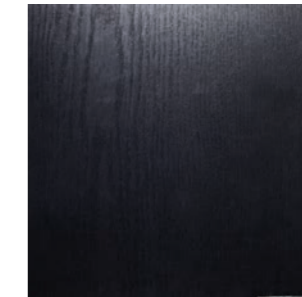
wineo design flooring comes in different surfaces, which are designed to suit the decors. Wood structures, for example, ensure that your flooring feels particularly authentic. (Please refer to the labelling under the design pictures.)



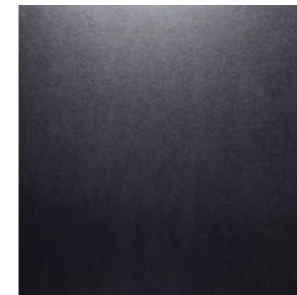
Fine wooden pore



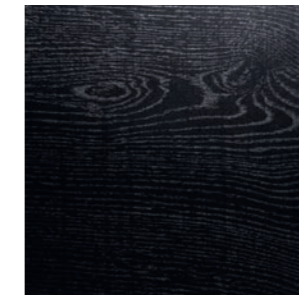
Rough wood structure



Exclusive wood structure



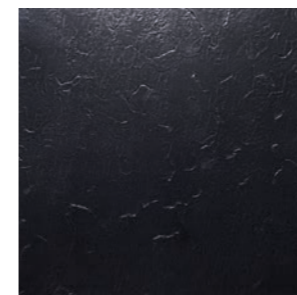
Sand structure



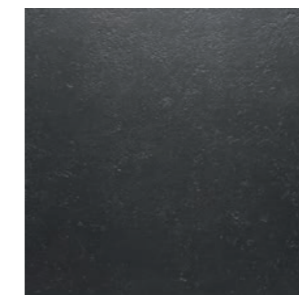
Rough sawn surface



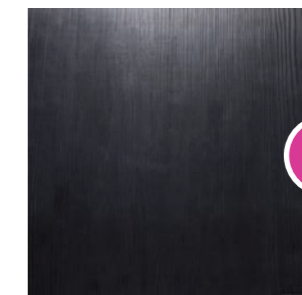
Stone structure



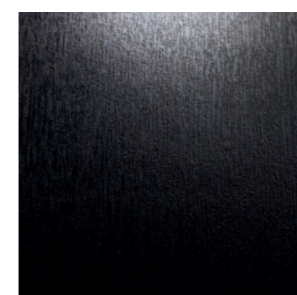
Slate structure



Travertine



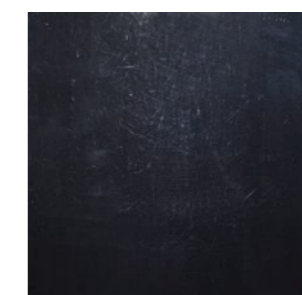
Registered embossed surface



Brushed structure



Handscraped I



Glossy surface

i

Designs with a registered embossed surface look especially authentic, as the surface structure is in sync with the wood grain. The expression of knots and lines in the wood gives the floor its unique originality.



ambra

3-in-1

CONFIDENT IN STYLE. COMBINED.

The ambra from wineo is an all-rounder for your home. The collection is available in three product types, providing the perfect flooring solution for all application areas. From elastic design flooring for gluing or clicking in to Multi-Layer for clicking in – discover 16 modern wood designs and 6 stone decors for your home or for commercial properties.



Long Island
1 strip | Rough wood structure
Skirting board 19/58: 30060492
Glue: DPI101113AMW
Click: CPI101113AMW
Click (Multi-Layer): MLPI101113AMW-N



Lohas Light
1 strip | Rough wood structure
Skirting board 19/58: 30060496
Glue: DPI73212AMW
Click: CPI73212AMW
Click (Multi-Layer): MLPI73212AMW-N



Highlands Light
1 strip | Fine wooden pore
Skirting board 19/58: 30060491
Glue: DEI75213AMW
Click: CEI75213AMW
Click (Multi-Layer): MLEI75213AMW-N



Wild Apple
1 strip | Rough wood structure
Skirting board 19/58: 30060482
Glue: DAP61413AMW
Click: CAP61413AMW
Click (Multi-Layer): MLAP61413AMW-N



Arizona Oak Light Grey
1 strip | Rough wood structure
Skirting board 19/58: 30060493
Glue: DEI25418AMW
Click: CEI25418AMW
Click (Multi-Layer): MLEI25418AMW-N



Boston Pine Grey
1 strip | Rough wood structure
Skirting board 19/58: 30060493
Glue: DPI71713AMW
Click: CPI71713AMW
Click (Multi-Layer): MLPI71713AMW-N



Natural Apple
1 strip | Rough wood structure
Skirting board 19/58: 30060436
Glue: DAP61416AMW
Click: CAP61416AMW
Click (Multi-Layer): MLAP61416AMW-N



Golden Canadian Oak
1 strip | Rough wood structure
Skirting board 19/58: 30060486
Glue: DEI54612AMW
Click: CEI54612AMW
Click (Multi-Layer): MLEI54612AMW-N



Arizona Oak Grey
1 strip | Rough wood structure
Skirting board 19/58: 30060484
Glue: DEI25114AMW
Click: CEI25114AMW
Click (Multi-Layer): MLEI25114AMW-N



Lohas Greige
1 strip | Rough wood structure
Skirting board 19/58: 30060497
Glue: DPI73217AMW
Click: CPI73217AMW
Click (Multi-Layer): MLPI73217AMW-N



Indian Oak
1 strip | Rough wood structure
Skirting board 19/58: 30060488
Glue: DEI55413AMW
Click: CEI55413AMW
Click (Multi-Layer): MLEI55413AMW-N



Highlands Dark
1 strip | Fine wooden pore
Skirting board 19/58: 30060490
Glue: DEI75212AMW
Click: CEI75212AMW
Click (Multi-Layer): MLEI75212AMW-N



Grey Canadian Oak
1 strip | Rough wood structure
Skirting board 19/58: 30060487
Glue: DEI54615AMW
Click: CEI54615AMW
Click (Multi-Layer): MLEI54615AMW-N



Boston Pine Cream
1 strip | Rough wood structure
Skirting board 19/58: 30060495
Glue: DPI71717AMW
Click: CPI71717AMW
Click (Multi-Layer): MLPI71717AMW-N



Boston Pine Brown
1 strip | Rough wood structure
Skirting board 19/58: 30060494
Glue: DPI71716AMW
Click: CPI71716AMW
Click (Multi-Layer): MLPI71716AMW-N



Bretagne Oak
1 strip | Rough wood structure
Skirting board 19/58: 30060489
Glue: DEI63614AMW
Click: CEI63614AMW
Click (Multi-Layer): MLEI63614AMW-N



Monza
ambra stone | DM35811AMS
ambra stone | CM35811AMS
ambra stone | MLM35811AMS-N



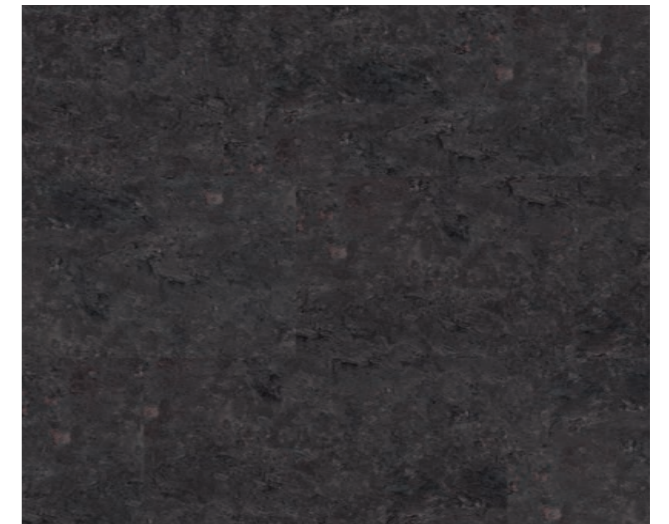
Siena
Travertine
Skirting board 19/58: 30060435 (White) **Glue:** DS21106AMS
Click: CS21106AMS
Click (Multi-Layer): MLS21106AMS-N



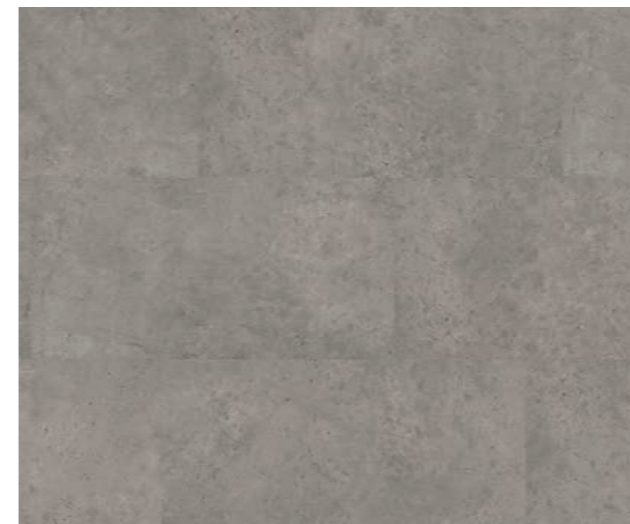
Monza
Travertine
Skirting board 19/58: 30060435 (White) **Glue:** DM35811AMS
Click: CM35811AMS
Click (Multi-Layer): MLM35811AMS-N



Berlin Night
Sand structure
Skirting board 19/58: 30060435 (White) **Glue:** DBN28412AMS
Click: CBN28412AMS
Click (Multi-Layer): MLBN28412AMS-N



Dakar
Slate structure
Skirting board 19/58: 30060435 (White) **Glue:** DD21833AMS
Click: CD21833AMS
Click (Multi-Layer): MLD21833AMS-N



Harlem
Sand structure
Skirting board 19/58: 30060435 (White) **Glue:** DH50515AMS
Click: CH50515AMS
Click (Multi-Layer): MLH50515AMS-N

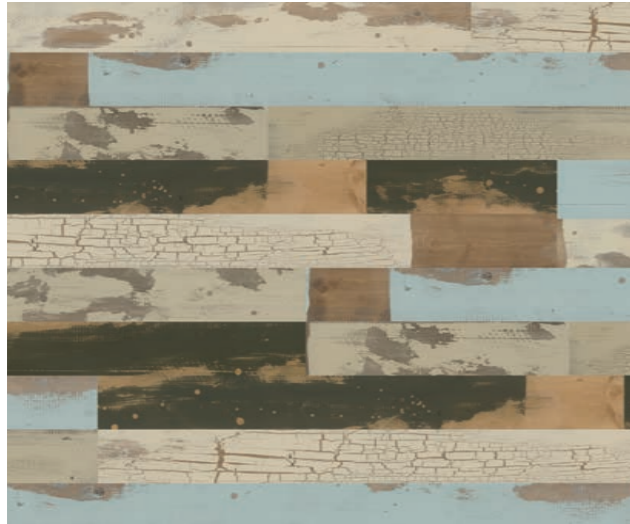


Berlin Day
Sand structure
Skirting board 19/58: 30060435 (White) **Glue:** DBD284112AMS
Click: CBD284112AMS
Click (Multi-Layer): MLBD284112AMS-N

wineo 600

CONFIDENT IN STYLE. DISPLAYING VARIETY.

With a wear layer of 0.4 mm, wineo 600 for gluing or clicking in is suitable for a broad range of applications. The 24 wood designs and 8 stone looks, some of which have real joints, are not only suitable for commercial property but also for private customers, who appreciate resilient flooring in trendy designs.



Patchwork
2 strip | Rough sawn surface
Skirting board 19/58: 30060435 (White)

Glue: DB00011
Click: DLC00011



Chateau White
1 strip | Rough sawn surface
Skirting board 19/58: 30060448

Glue: DB00001
Click: DLC00001



Polaris
1 strip | Handscraped I
Skirting board 19/58: 30060435 (White)

Glue: DB00012
Click: DLC00012



Chateau Grey
1 strip | Rough sawn surface
Skirting board 19/58: 30060450

Glue: DB00003
Click: DLC00003



Toscany Pine Grey
1 strip | Rough wood structure
Skirting board 19/58: 30060454

Glue: DB00008
Click: DLC00008



Aurelia Grey
1 strip | Registered embossed surface
Skirting board 19/58: 30060452

Glue: DB00005
Click: DLC00005



Venero Oak Brown
1 strip | Rough sawn surface
Skirting board 19/58: 30060451

Glue: DB00014
Click: DLC00014



Aurelia Provence
1 strip | Registered embossed surface
Skirting board 19/58: 30060451

Glue: DB00004
Click: DLC00004



Toscany Pine
1 strip | Rough wood structure
Skirting board 19/58: 30060454

Glue: DB00007
Click: DLC00007



Calm Oak Nature
1 strip | Handscraped I
Skirting board 19/58: 30060456

Glue: DB00009
Click: DLC00009



Chateau Brown
1 strip | Rough sawn surface
Skirting board 19/58: 30060449

Glue: DB00002
Click: DLC00002
Click (Multi-Layer): MLP173212AMW-N



Venero Oak Beige
1 strip | Rough sawn surface
Skirting board 19/58: 30060458

Glue: DB00013
Click: DLC00013



Calm Oak Cream
1 strip | Handscraped I
Skirting board 19/58: 30060457

Glue: DB00010
Click: DLC00010



Aurelia Cream
1 strip | Registered embossed surface
Skirting board 19/58: 30060453

Glue: DB00006
Click: DLC00006

wineo 600 wood XL



Aumera Oak Grey*
1 strip | **Registered embossed surface**
Skirting board 19/58: 30060466

Glue: DB00029
Click: DLC00029



Scandic Grey
1 strip | Rough wood structure
Skirting board 19/58: 30060462

Glue: DB00025
Click: DLC00025



Scandic White
1 strip | Rough wood structure
Skirting board 19/58: 30060463

Glue: DB00026
Click: DLC00026



Victoria Oak White*
1 strip | **Registered embossed surface**
Skirting board 19/58: 30060469

Glue: DB00032
Click: DLC00032



Woodstock Cream
1 strip | Rough wood structure
Skirting board 19/58: 30060461

Glue: DB00024
Click: DLC00024



Victoria Oak Native*
1 strip | **Registered embossed surface**
Skirting board 19/58: 30060458

Glue: DB00031
Click: DLC00031



Aumera Oak Native*
1 strip | **Registered embossed surface**
Skirting board 19/58: 30060467

Glue: DB00028
Click: DLC00028



Victoria Oak Grey*
1 strip | **Registered embossed surface**
Skirting board 19/58: 30060467

Glue: DB00030
Click: DLC00030



Woodstock Honey
1 strip | Rough wood structure
Skirting board 19/58: 30060464

Glue: DB00023
Click: DLC00023

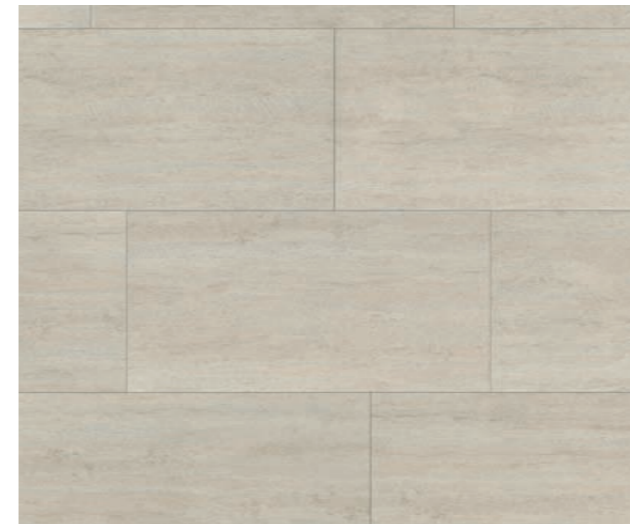


Aumera Oak Dark*
1 strip | **Registered embossed surface**
Skirting board 19/58: 30060464

Glue: DB00027
Click: DLC00027

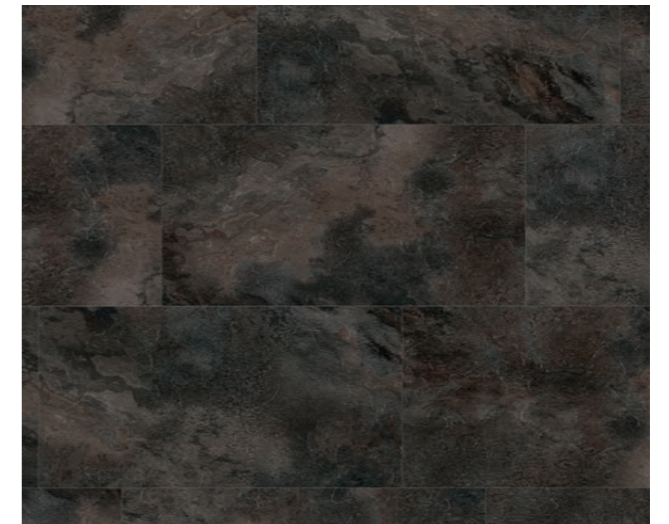


Lava Grey
wineo 600 stone | DB00015
wineo 600 stone | DLC00015



Polar Travertine
Sand structure

Glue: DB00017
Click: DLC00017 (Real joint)



Silver Slate
Slate structure

Glue: DB00018
Click: DLC00018 (Real joint)



Lava Grey
Sand structure

Glue: DB00015
Click: DLC00015



Lava Black
Sand structure

Glue: DB00016
Click: DLC00016

wineo 600 stone XL



Navajo Cream
Stone structure

Glue: DB00019
Click: DLC00019



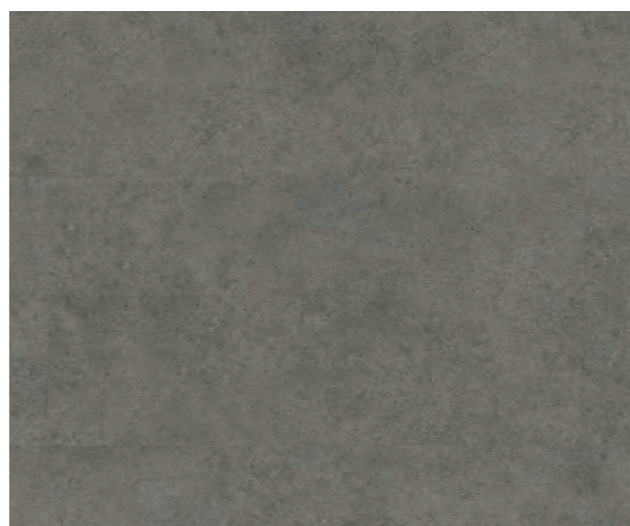
Navajo Grey
Stone structure

Glue: DB00020
Click: DLC00020



Brooklyn Day
Stone structure

Glue: DB00021
Click: DLC00021



Brooklyn Night
Stone structure

Glue: DB00022
Click: DLC00022



Brooklyn Night
wineo 600 stone XL | DB00022
wineo 600 stone XL | DLC00022

Anna, Stylist

»As a stylist, I am on my feet all day long. So I appreciate every single minute of being on an elastic design flooring, which is gentle on the joints.«

**wineo 800**

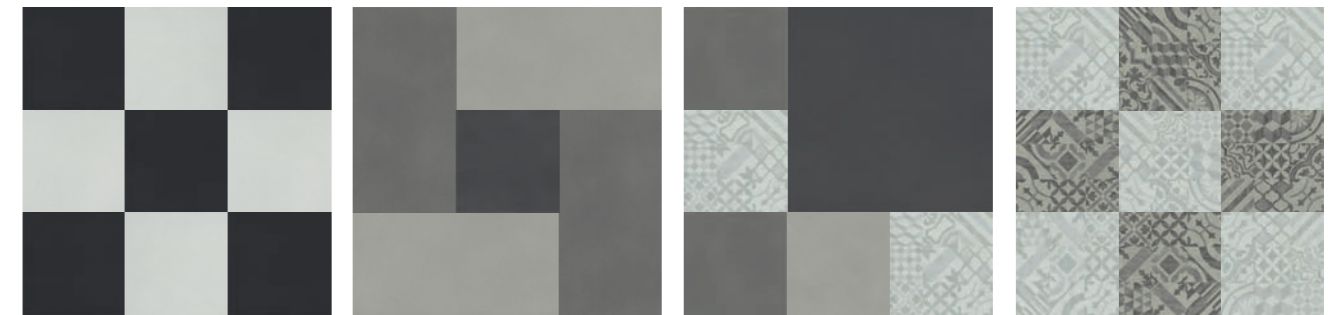
CONFIDENT IN STYLE. MAKING AN IMPACT.

Developed with the help of trend scouts, wineo 800 provides plenty of impressive new inspirations. The collection offers 42 innovative designs for gluing or clicking, in a total of 8 different formats. With a wear layer of 0.55 mm, wineo 800 is a premium design covering and is therefore ideal for commercial property and discerning private customers.

Infinity Light Mixed
wineo 800 craft | DB00072

COMBINATIONS

wineo 800 in particular offers plenty of opportunities for creatively combining various decors and formats for gluing. This means that any floor can be transformed, making it truly distinctive and unique.

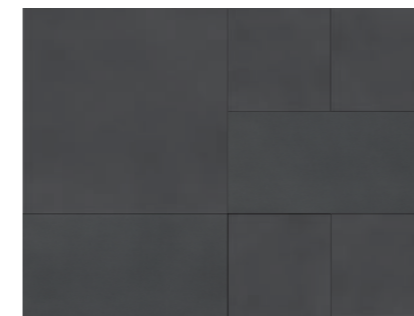


tile L

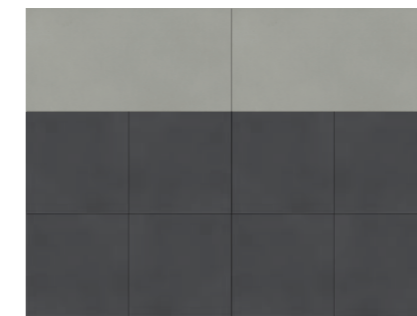
tile L | tile XL

tile L | tile XXL | craft

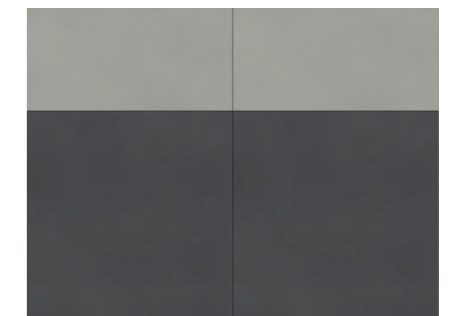
craft



tile L | tile XL | tile XXL



tile L | tile XL



tile L | tile XXL



wood | tile



wood | craft



tile L | craft



tile XL



tile XL



craft



craft



wood | craft

wineo 800 wood | wood XL

Installation type: Glue
Product thickness: 2.5 mm
Wear layer: 0.55 mm
Planks / boxes: 16/3.46 m²



1200 × 180 mm

Installation type: Click
Product thickness: 5 mm
Wear layer: 0.55 mm
Planks / boxes: 8/1.79 m²



1212 × 185 mm

Installation type: Glue
Product thickness: 2.5 mm
Wear layer: 0.55 mm
Planks / boxes: 12/4.37 m²



1505 × 235 mm

Installation type: Click
Product thickness: 5 mm
Wear layer: 0.55 mm
Planks / boxes: 6/2.14 m²



1505 × 237 mm



Mona, Gallery Owner

»For my exhibitions, it is important that the flooring provides a stage for the works of art so that their full effect can be appreciated. In the background, high-quality and hard-wearing. That's precisely what flooring should be.«



Helsinki Rustic Oak
 wineo 800 wood XL | DB00068
 wineo 800 wood XL | DLC0068

SCANDINAVIAN LIGHT WOOD

NATURAL WARM WOOD



Copenhagen Frosted Pine
1 strip | Handscraped I
Skirting board 19/58: 30060550

Glue: DB00076
Click: DLC00076



Gothenburg Calm Oak
1 strip | Exclusive wood structure
Skirting board 19/58: 30060435 (White)

Glue: DB00077
Click: DLC00077



Salt Lake Oak
1 strip | Exclusive wood structure
Skirting board 19/58: 30060551

Glue: DB00079
Click: DLC00079



Wheat Golden Oak
1 strip | Exclusive wood structure
Skirting board 19/58: 30060552

Glue: DB00080
Click: DLC00080



Riga Vibrant Pine
1 strip | Exclusive wood structure
Skirting board 19/58: 30060554

Glue: DB00082
Click: DLC00082



Honey Warm Maple
1 strip | Exclusive wood structure
Skirting board 19/58: 30060553

Glue: DB00081
Click: DLC00081



Clay Calm Oak
1 strip | Registered embossed surface
Skirting board 19/58: 30060540

Glue: DB00062
Click: DLC00062



Helsinki Rustic Oak
1 strip | Registered embossed surface
Skirting board 19/58: 30060546

Glue: DB00068
Click: DLC00068



Lund Dusty Oak
1 strip | Registered embossed surface
Skirting board 19/58: 30060543

Glue: DB00065
Click: DLC00065



Corn Rustic Oak
1 strip | Registered embossed surface
Skirting board 19/58: 30060542

Glue: DB00064
Click: DLC00064



Mud Rustic Oak
1 strip | Registered embossed surface
Skirting board 19/58: 30060541

Glue: DB00063
Click: DLC00063



Joanne, Fashion Designer
"In my boutique, my customer's individuality is everything. The design of the shop should support the individual style of my clients."

Sardinia Wild Walnut
 wineo 800 wood | DB00083
 wineo 800 wood | DLC00083

MEDITERRANEAN DARK WOOD



Balearic Wild Oak
 1 strip | Exclusive wood structure
 Skirting board 19/58: 30060435 (White)

Glue: DB00078
Click: DLC00078



Crete Vibrant Oak
 1 strip | Exclusive wood structure
 Skirting board 19/58: 30060435 (White)

Glue: DB00075
Click: DLC00075



Sardinia Wild Walnut
 1 strip | Exclusive wood structure
 Skirting board 19/58: 30060555

Glue: DB00083
Click: DLC00083



Cyprus Dark Oak
 1 strip | **Registered embossed surface**
 Skirting board 19/58: 30060544

Glue: DB00066
Click: DLC00066



Santorini Deep Oak
 1 strip | **Registered embossed surface**
 Skirting board 19/58: 30060539

Glue: DB00061
Click: DLC00061



Ponza Smoky Oak
 1 strip | **Registered embossed surface**
 Skirting board 19/58: 30060545

Glue: DB00067
Click: DLC00067

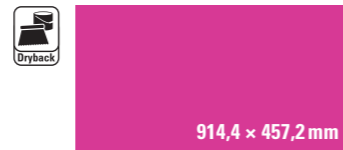


Sicily Dark Oak
 1 strip | **Registered embossed surface**
 Skirting board 19/58: 30060547

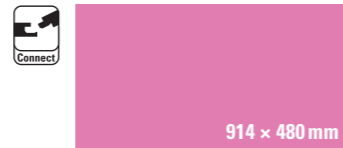
Glue: DB00069
Click: DLC00069

wineo 800 stone XL

Installation type: Glue
Product thickness: 2.5mm
Wear layer: 0.55mm
Planks / boxes: 10/4.18m²

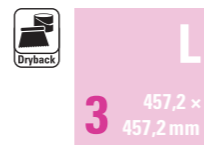


Installation type: Click
Product thickness: 5mm
Wear layer: 0.55mm
Planks / boxes: 6/2.63m²

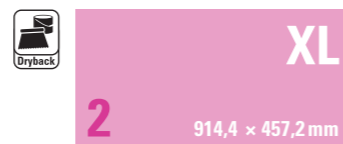


wineo 800 tile L | tile XL | tile XXL

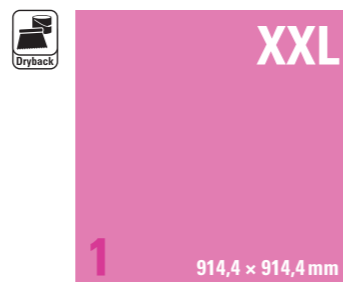
Installation type: Glue
Product thickness: 2.5mm
Wear layer: 0.55mm
Planks / boxes: 16/3.34m²



Installation type: Glue
Product thickness: 2.5mm
Wear layer: 0.55mm
Planks / boxes: 10/4.18m²

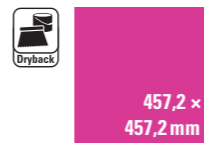


Installation type: Glue
Product thickness: 2.5mm
Wear layer: 0.55mm
Planks / boxes: 6/5.02m²



wineo 800 craft

Installation type: Glue
Product thickness: 2.5mm
Wear layer: 0.55mm
Planks / boxes: 16/3.34m²

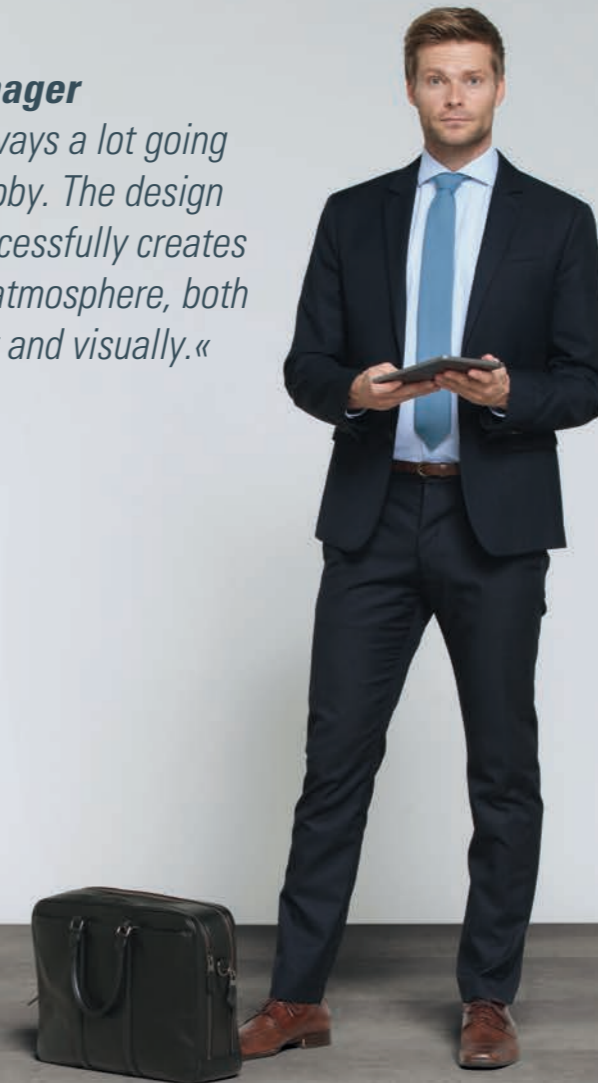


Installation type: Glue
Product thickness: 2.5mm
Wear layer: 0.55mm
Planks / boxes: 20/1.86m²

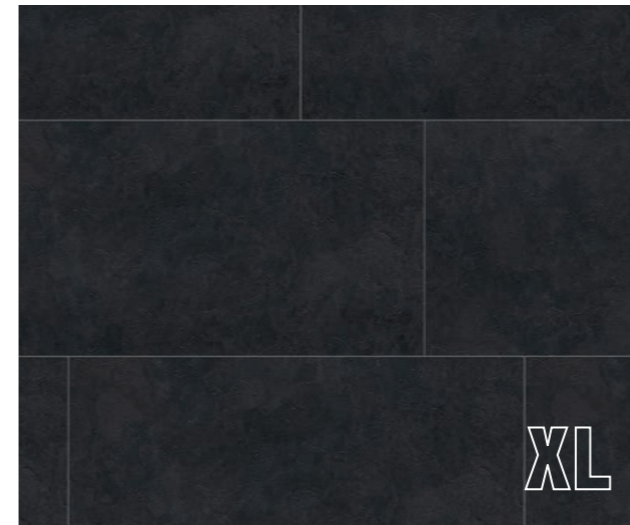


Lucas, Hotel Manager

»There's always a lot going on in our lobby. The design flooring successfully creates a peaceful atmosphere, both acoustically and visually.«

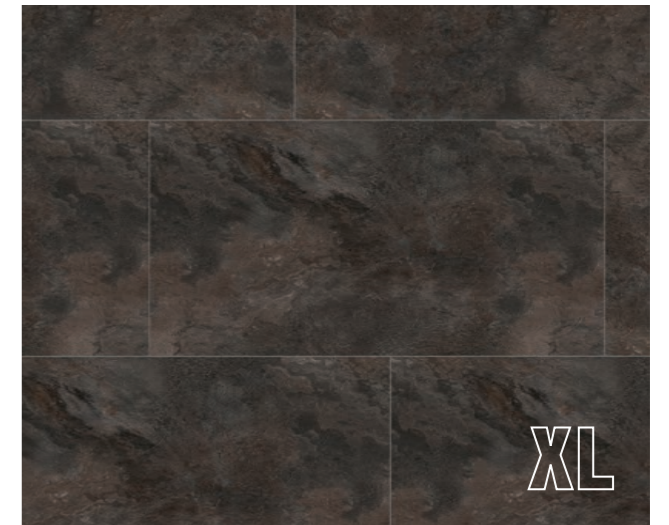


Raw Concrete
 wineo 800 stone XL | DB00088
 wineo 800 stone XL | DLC00088



Dark Slate
1 strip | Slate structure
Skirting board 19/58: 30060435 (White)

Glue: DB00085
Click: DLC00085*



Silver Slate
1 strip | Slate structure
Skirting board 19/58: 30060435 (White)

Glue: DB00087
Click: DLC00087*



Raw Concrete
1 strip | Sand structure
Skirting board 19/58: 30060435 (White)

Glue: DB00088
Click: DLC00088



Rough Concrete
1 strip | Sand structure
Skirting board 19/58: 30060435 (White)

Glue: DB00089
Click: DLC00089



Copper Slate
1 strip | Stone structure
Skirting board 19/58: 30060435 (White)

Glue: DB00091
Click: DLC00091*



Light Sand
1 strip | Stone structure
Skirting board 19/58: 30060435 (White)

Glue: DB00095
Click: DLC00095*



Calm Concrete
1 strip | Sand structure
Skirting board 19/58: 30060435 (White)

Glue: DB00094
Click: DLC00094



Heavy Metal
1 strip | Glossy surface
Skirting board 19/58: 30060435 (White)

Glue: DB00084
Click: DLC00084*



Art Concrete
1 strip | Sand structure
Skirting board 19/58: 30060435 (White)

Glue: DB00086
Click: DLC00086*



White Marble
1 strip | Sand structure
Skirting board 19/58: 30060435 (White)

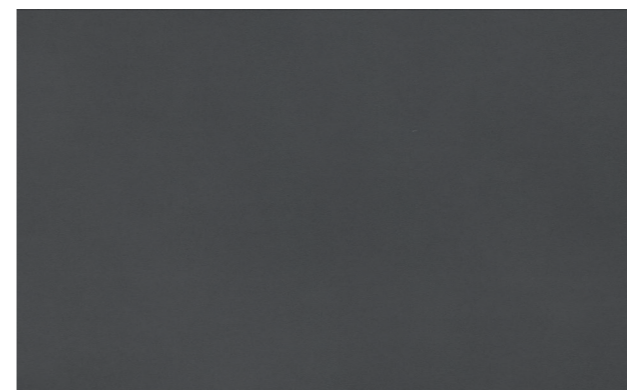
Glue: DB00090
Click: DLC00090

John, Architect

»Today's requirements are high. Flooring is a design element, which has to fulfil two major requirements: functionality and design – both to a very high quality.«



Solid Dark | Solid Grey | Solid Umbra
 wineo 800 tile | DB00096-1
 wineo 800 tile | DB00097-1
 wineo 800 tile | DB00098-1



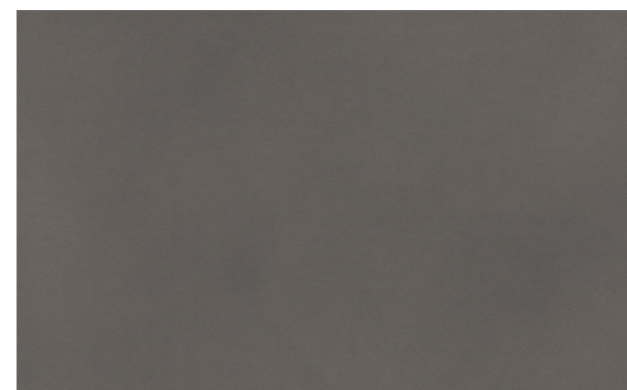
Solid Dark
 1 strip | Sand structure
 Skirting board 19/58: 30060435 (White)

Glue: DB00096-1
Glue: DB00096-2
Glue: DB00096-3



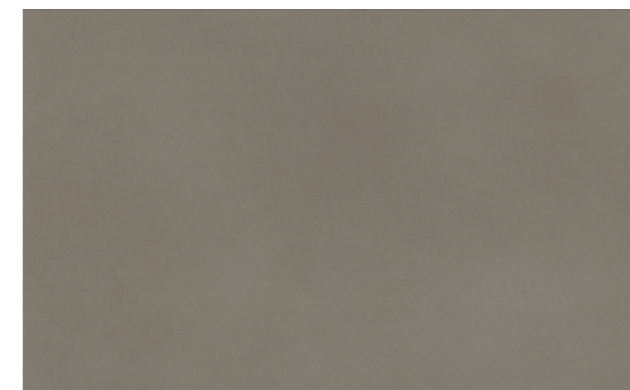
Solid Grey
 1 strip | Sand structure
 Skirting board 19/58: 30060435 (White)

Glue: DB00097-1
Glue: DB00097-2
Glue: DB00097-3



Solid Taupe
 1 strip | Sand structure
 Skirting board 19/58: 30060435 (White)

Glue: DB00099-1
Glue: DB00099-2
Glue: DB00099-3



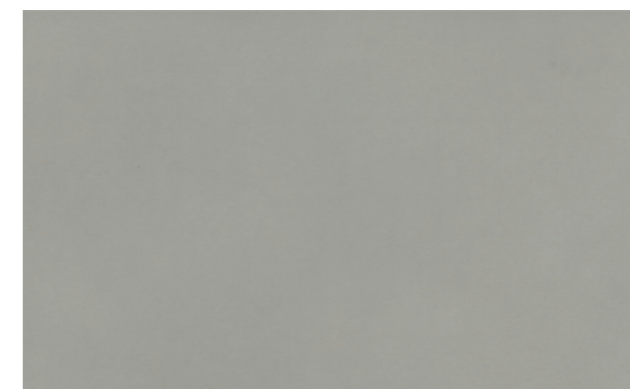
Solid Umbra
 1 strip | Sand structure
 Skirting board 19/58: 30060435 (White)

Glue: DB00098-1
Glue: DB00098-2
Glue: DB00098-3



Solid Sand
 1 strip | Sand structure
 Skirting board 19/58: 30060435 (White)

Glue: DB00100-1
Glue: DB00100-2
Glue: DB00100-3



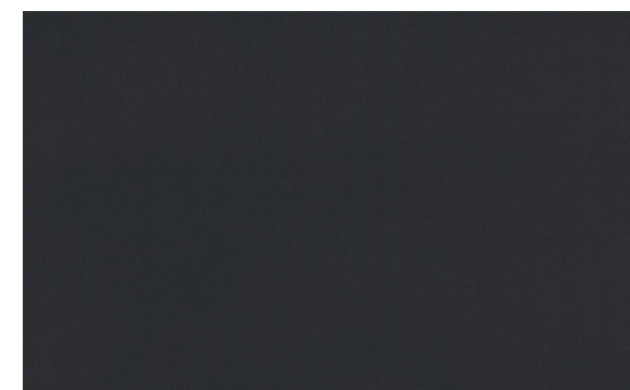
Solid Light
 1 strip | Sand structure
 Skirting board 19/58: 30060435 (White)

Glue: DB00101-1
Glue: DB00101-2
Glue: DB00101-3



Solid White
 1 strip | Handscraped I
 Skirting board 19/58: 30060435 (White)

Glue: DB00102-1
Glue: DB00102-2
Glue: DB00102-3



Solid Black
 1 strip | Handscraped I
 Skirting board 19/58: 30060435 (White)

Glue: DB00103-1
Glue: DB00103-2
Glue: DB00103-3



Mosaic Dark
1 strip | Sand structure
Skirting board 19/58: 30060435 (White)

Glue: DB00093



Mosaic Light
1 strip | Sand structure
Skirting board 19/58: 30060435 (White)

Glue: DB00092



Infinity Dark Solid
1 strip | Exclusive wood structure
Skirting board 19/58: 30060548

Glue: DB00073



Infinity Light Solid
1 strip | Exclusive wood structure
Skirting board 19/58: 30060549

Glue: DB00074



Infinity Dark Mixed*
1 strip | Exclusive wood structure
Skirting board 19/58: 30060435 (White)

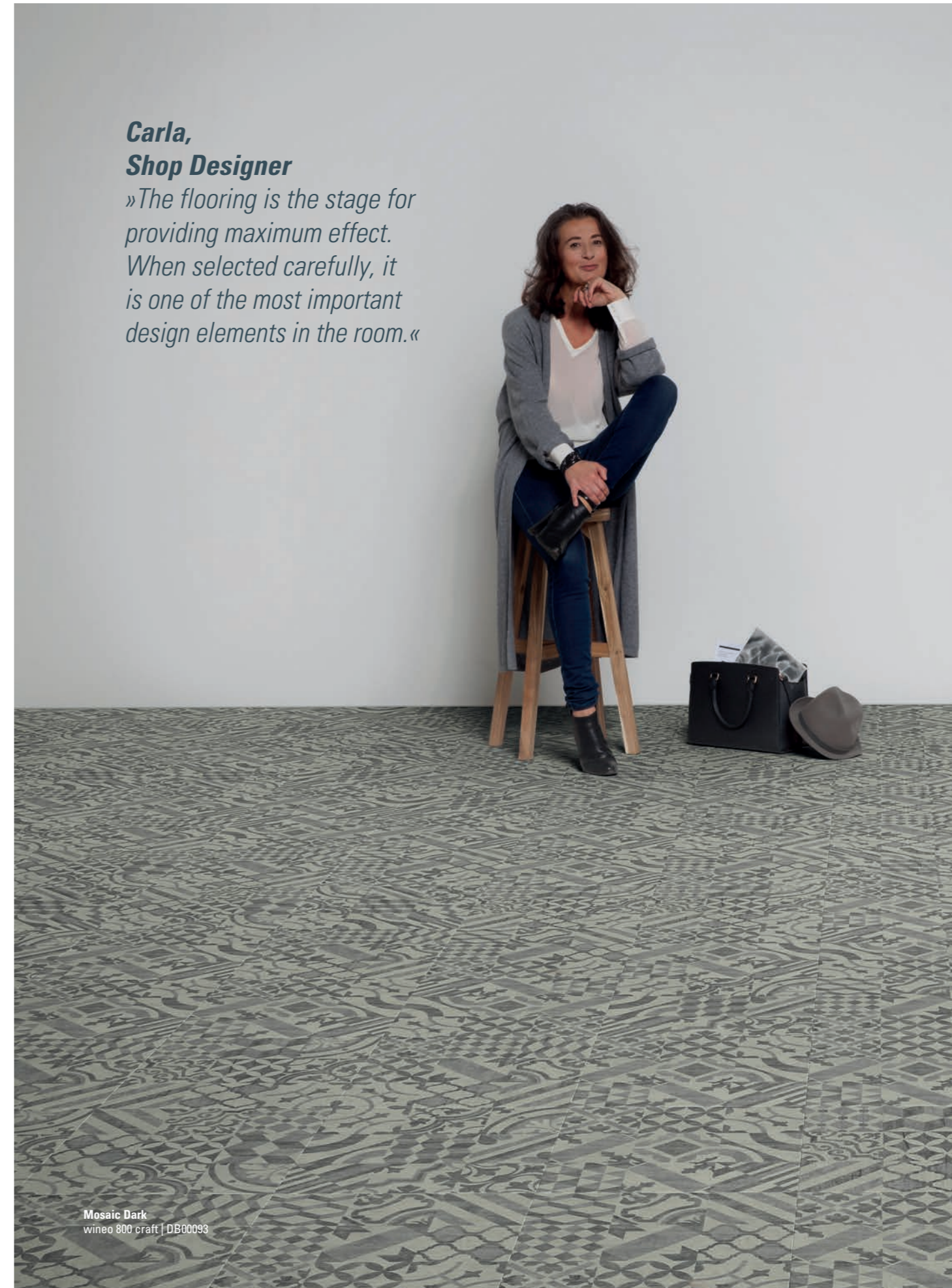
Glue: DB00071



Infinity Light Mixed*
1 strip | Exclusive wood structure
Skirting board 19/58: 30060435 (White)

Glue: DB00072

* Mixed=various plank colours in one box



**Carla,
Shop Designer**

»The flooring is the stage for providing maximum effect. When selected carefully, it is one of the most important design elements in the room.«

Mosaic Dark
wineo 800 craft | DB00093

ACCESSORIES

SKIRTING BOARDS

Our range of accessories includes suitable skirting boards, perfectly matching the decors in almost all our design flooring collections. Plain skirting, which can be universally combined with all designs, is also available. You can find advice on suitable skirting boards on the preceding collection pages and in our accessories brochure.



Skirting boards 19/58
MDF base
19 x 58 x 2400 mm



Skirting boards 15/80
MDF base
15 x 80 x 2400 mm

Clipholder fastening system

In order to install wineo skirting boards quickly and easily, we recommend using the Clipholder fastening system. This system enables cables to be invisibly routed and can be removed without any problems whenever you would like to paint or wallpaper the walls.



FEATURE STRIPS

wineo feature strips can be used on all design flooring for gluing to enhance the natural plank or tile look. The format of the individual elements is emphasised, creating a joint effect.

Cream

Silver grey

Dark brown

Anthracite

Black

i

You can find more detailed information in our Accessories Brochure, which you can also view online:

www.wineo.de/en/service/downloads

UNDERLAY MATERIAL

We recommend using our silentPREMIUM or silentCOMFORT insulation mats with wineo design flooring – the ideal underlay material made from up to **90% natural raw materials** for even more comfort and optimum acoustics.

- outstanding and long-lasting impact sound qualities
- punctual conformability
- increased ease of installation
- perfect for underfloor heating

wineo silentPREMIUM insulation mat
self-adhesive



Impact sound reduction:
Up to 15 dB in the system with wineo design flooring for gluing

wineo silentCOMFORT insulation mat
with non-slip effect



Impact sound reduction:
Up to 14 dB in the system with wineo design flooring for clicking in

ALUMINIUM PROFILES

wineo profiles are ideal for creating a neat finish between floors and walls, adjacent thresholds or other components. They form a smooth transition, close expansion gaps and are available in classic metal looks as well as in various wood designs to choose from. You can see an overview of all the available transition, adjustment and end profiles in the Accessories Brochure.

TRANSITION PROFILES



ADJUSTMENT PROFILES



END PROFILES



SERVICE

We work with distributors, architects, property developers and anyone who appreciates great floorings. That's why we offer a wide range of services. If you would like to be kept regularly up to date, just take a look at YouTube, Facebook, Twitter or Pinterest.



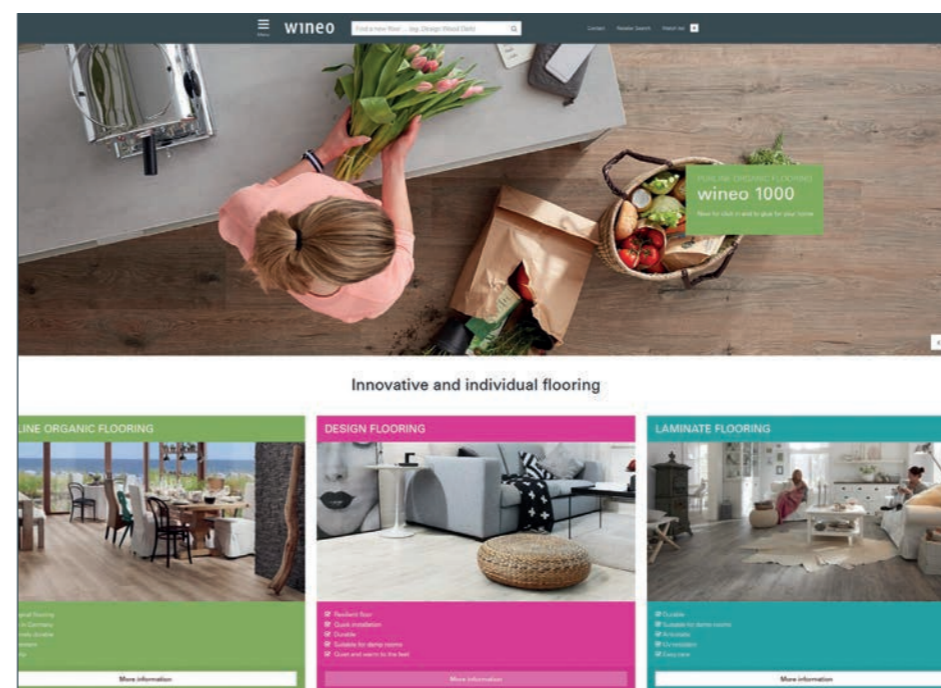
TECHNICAL SUPPORT

Do you have any questions about our products, where they can be used or about the installation? Do not hesitate to contact your distributor, we will be happy to help you.



MARKETING SUPPORT

We have a **wide range of samples and printed materials** to help with product presentation and sales promotion at the POS. You can get an overview of all our presentation tools, from brochures to displays, in our **"ADVERTISING WITH WINEO"** sales promotion brochure. Of course we can also coordinate with you to fulfil your **individual requirements**. Don't hesitate to get in touch!



NEWSLETTER

Stay in touch with us: it's easy to sign up for the wineo newsletter on our website. This will guarantee that you don't miss out on anything and will always be kept up to date.

COMPANY BLOG

Get some inspiration and find out even more about our products, references and events. Discover it now at:

blog.wineo.de/en

EN.WINEO.DE

- information and references as well as relevant downloads on the products
- all top references with full descriptions
- product search by characteristic, colour, format, installation height and utilization class
- find a retailer
- video portal with plenty of tips and tricks, such as installation instructions

QUALITY

wineo stands for modern quality flooring right at the heart of everyday life. We meet requirements head on and come up with great ideas. That's what makes us the ideal choice when it comes to creating a comfortable lifestyle, dealing with demanding projects and creating successful businesses. Our business focuses on quality, service and the power of innovation.

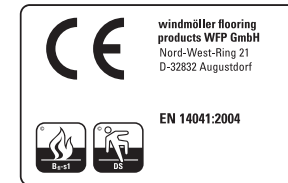
Tested quality

Since wineo flooring has to fulfil the highest requirements, it has to undergo a strict quality control process. From worldwide suppliers of raw materials right through to the finished and packaged product, our flooring is subjected to a 7-stage quality control process subject to the highest standards. This means that we can guarantee that our quality products, which have been recognised by several awards, continue to set standards in the future.

High level of responsibility

As a family business in the third generation, we have a high level of social and ecological responsibility. Consistent availability of goods, intense user and marketing support, expert advice and permanent product improvement and development are what make wineo stand out and ensure the trust and security of our market partners worldwide.

wineo



CE marking

The CE marking confirms that our product has been tested and that it meets all EU requirements in terms of safety, healthcare and environmental protection.



A+

Just like the "Blue Angel" in Germany, the A+ seal identifies our products as ecological, healthy and user friendly in the French market.



PEFC (valid for Multi-Layer)

The PEFC quality seal is based on very strict guidelines for managing our forests in a sustainable manner and guarantees that timber is used from verified cultivation sources. The entire product manufacturing process - from the raw materials through to the ready-to-use end product - is certified and verified by independent assessors.



TFI-TÜV PROFICERT

The TFI (Textiles & Flooring Institute GmbH) and TÜV Hessen evaluate products from a quality, health and ecological point of view. Essentially, products can only be certified if they present no health risk.



Fachverband der
Hersteller elastischer
Bodenbeläge e. V.

factory made
coated



COLLECTION OVERVIEW

Collection	ambra wood			ambra stone			wineo 600 wood		wineo 600 wood XL		wineo 600 stone		wineo 600 stone XL		wineo 800 wood		wineo 800 wood XL		wineo 800 stone XL		wineo 800 tile			wineo 800 craft		
	Multi-Layer			Multi-Layer													L	XL	XXL							
Installation type	Glue	Click	Click	Glue	Click	Click	Glue	Click	Glue	Click	Glue	Click	Glue	Click	Glue	Click	Glue	Click	Glue	Click	Glue	Glue	Glue	Glue	Glue	
Core board	-	-	Aqua-Protect®	-	-	Aqua-Protect®	-	-	-	-	-	-	-	-	-	-	-	-	-	-	-	-	-	-	-	
Format	1200 × 180 mm	1212 × 185 mm	1200 × 212 mm	609.6 × 304.8 mm	600 × 314 mm	591 × 287 mm	1200 × 180 mm	1212 × 185 mm (DLC00011)	1505 × 235 mm	1505 × 237 mm	609.6 × 304.8 mm	600 × 317 mm	900 × 450 mm	914 × 480 mm	1200 × 180 mm	1212 × 185 mm	1505 × 235 mm	1505 × 237 mm	914.4 × 457.2 mm	914 × 480 mm	457.2 × 457.2 mm	914.4 × 457.2 mm	914.4 × 914.4 mm	457.2 × 457.2 mm	914.4 × 101.6 mm	
Product thickness	2 mm	4.5 mm	9 mm	2 mm	4.5 mm	9 mm	2 mm	5 mm	2 mm	5 mm	2 mm	5 mm	2 mm	5 mm	2.5 mm	5 mm	2.5 mm	5 mm	2.5 mm	5 mm	2.5 mm	5 mm	2.5 mm	5 mm	2.5 mm	
Wear layer	0.3 mm	0.3 mm	0.3 mm	0.3 mm	0.3 mm	0.3 mm	0.4 mm	0.4 mm	0.4 mm	0.4 mm	0.4 mm	0.4 mm	0.4 mm	0.4 mm	0.55 mm	0.55 mm	0.55 mm	0.55 mm	0.55 mm	0.55 mm	0.55 mm	0.55 mm	0.55 mm	0.55 mm	0.55 mm	
Planks and/or Tiles / boxes	18/3.89 m ²	10/2.24 m ²	8/2.04 m ²	18/3.34 m ²	12/2.26 m ²	9/1.53 m ²	18/3.89 m ²	8/1.81 m ² 8/1.79 m ² (DLC00011)	12/4.24 m ²	6/2.14 m ²	18/3.34 m ²	10/1.90 m ²	12/4.86 m ²	6/2.63 m ²	16/3.46 m ²	8/1.79 m ²	12/4.37 m ²	6/2.14 m ²	10/4.18 m ²	6/2.63 m ²	6/5.02 m ²	10/4.18 m ²	16/3.34 m ²	16/3.34 m ²	20/1.86 m ²	
Boxes / Pallet	60/233.40 m ²	52/116.48 m ²	48/97.92 m ²	72/240.48 m ²	52/117.52 m ²	60/91.80 m ²	60/233.40 m ²	64/115.84 m ² 64/114.56 m ² (DLC00011)	64/271.36 m ²	56/119.84 m ²	72/240.48 m ²	60/114.00 m ²	50/243.00 m ²	44/115.72 m ²	75/259.20 m ²	64/114.75 m ²	60/262.26 m ²	56/119.84 m ²	40/167.20 m ²	44/115.72 m ²	37/185.74 m ²	40/167.20 m ²	52/173.68 m ²	52/173.68 m ²	135/250.83 m ²	
Surface treatment	UV	UV	UV	UV	UV	UV	PU	PU	PU/UV	PU/UV	PU	PU	PU	PU	PU	PU	PU	PU	PU	PU	PU	PU	PU	PU	PU	
Bevelled edge	-	-	-	-	-	-	-	-	-	-	-	-	-	-	■	■	■	■	-	DLC00088 – 90, 94	■	■	■	■	■	
Real joint	-	-	-	-	-	-	-	-	-	-	-	DLC00017 DLC00018	-	-	-	-	-	-	-	DLC00084 – 87 DLC00091,95	-	-	-	-	-	
Utilization class EN ISO 10874	23/31	23/31	23/31	23/31	23/31	23/31	23/32/41	23/32/41	23/32/41	23/32/41	23/32/41	23/32/41	23/32/41	23/32/41	23/33/42	23/33/42	23/33/42	23/33/42	23/33/42	23/33/42	23/33/42	23/33/42	23/33/42	23/33/42	23/33/42	
Wear resistance EN 660-2	Group T																									
Reaction to fire EN 13501-1	B _n - s1	B _n - s1	B _n - s1	B _n - s1	B _n - s1	B _n - s1	B _n - s1	B _n - s1	B _n - s1	B _n - s1	B _n - s1	B _n - s1	B _n - s1	B _n - s1	B _n - s1	B _n - s1	B _n - s1	B _n - s1	B _n - s1	B _n - s1	B _n - s1	B _n - s1	B _n - s1	B _n - s1		
Anti slip category DIN 51130	R 9	R 9	R 9	R 9	R 9	R 9	R 9	R 9	R 9	R 9	R 9	R 9	R 9	R 9	R 9	R 9	R 9	R 9	R 9	R 9	R 9	R 9	R 9	R 9	R 9	
Slip resistance EN 13893	μ ≥ 0.30 - DS	μ ≥ 0.30 - DS	μ ≥ 0.30 - DS	μ ≥ 0.30 - DS	μ ≥ 0.30 - DS	μ ≥ 0.30 - DS	μ ≥ 0.30 - DS	μ ≥ 0.30 - DS	μ ≥ 0.30 - DS	μ ≥ 0.30 - DS	μ ≥ 0.30 - DS	μ ≥ 0.30 - DS	μ ≥ 0.30 - DS	μ ≥ 0.30 - DS	μ ≥ 0.30 - DS	μ ≥ 0.30 - DS	μ ≥ 0.30 - DS	μ ≥ 0.30 - DS	μ ≥ 0.30 - DS	μ ≥ 0.30 - DS	μ ≥ 0.30 - DS	μ ≥ 0.30 - DS	μ ≥ 0.30 - DS	μ ≥ 0.30 - DS	μ ≥ 0.30 - DS	
Anti-static properties EN 1815	≤ 2 kV	≤ 2 kV	≤ 2 kV	≤ 2 kV	≤ 2 kV	≤ 2 kV	≤ 2 kV	≤ 2 kV	≤ 2 kV	≤ 2 kV	≤ 2 kV	≤ 2 kV	≤ 2 kV	≤ 2 kV	≤ 2 kV	≤ 2 kV	≤ 2 kV	≤ 2 kV	≤ 2 kV	≤ 2 kV	≤ 2 kV	≤ 2 kV	≤ 2 kV	≤ 2 kV	≤ 2 kV	
Staining / Chemical resistance EN ISO 26987	High resistance level in interdependency with concentration and application time.																									
Light fastness EN ISO 105-B02	≥ 6	≥ 6	≥ 6	≥ 6	≥ 6	≥ 6	≥ 6	≥ 6	≥ 6	≥ 6	≥ 6	≥ 6	≥ 6	≥ 6	≥ 6	≥ 6	≥ 6	≥ 6	≥ 6	≥ 6	≥ 6	≥ 6	≥ 6	≥ 6	≥ 6	
Residual indentation EN ISO 24343-1	~ 0.02 mm	~ 0.07 mm	~ 0.02 mm	~ 0.02 mm	~ 0.07 mm	~ 0.02 mm	~ 0.02 mm	~ 0.07 mm	~ 0.02 mm	~ 0.07 mm	~ 0.02 mm	~ 0.07 mm	~ 0.02 mm	~ 0.07 mm	~ 0.02 mm	~ 0.07 mm	~ 0.02 mm	~ 0.07 mm	~ 0.02 mm	~ 0.07 mm	~ 0.07 mm	~ 0.07 mm	~ 0.07 mm	~ 0.07 mm	~ 0.07 mm	
Castor chair test EN 425 / ISO 4918	Type W - no visible change																									
Suitability for underfloor heating	Suitable for all conventional hot-water-based underfloor heating systems and regulated electrical systems up to a surface temperature of 27° C.																									
Thermal resistance in (m ² K)/W EN 12667 in combination with silentCOMFORT	~ 0.01 -	~ 0.033 ~ 0.0254	~ 0.06 -	~ 0.01 -	~ 0.033 ~ 0.0254	~ 0.06 -	~ 0.01 -	~ 0.033 ~ 0.0254	~ 0.01 -	~ 0.033 ~ 0.0254	~ 0.01 -	~ 0.033 ~ 0.0254	~ 0.01 -	~ 0.033 ~ 0.0254	~ 0.01 -	~ 0.033 ~ 0.0254	~ 0.01 -	~ 0.033 ~ 0.0254	~ 0.01 -	~ 0.033 ~ 0.0254	~ 0.01 -	~ 0.01 -	~ 0.01 -	~ 0.01 -	~ 0.01 -	
Impact sound reduction EN ISO 16251-1 in combination with silentCOMFORT	~ 4 dB -	~ 7 dB ~ 14 dB	≤ 14 dB -	~ 4 dB -	~ 7 dB ~ 14 dB	≤ 14 dB -	~ 4 dB -	~ 7 dB ~ 14 dB	~ 4 dB -	~ 7 dB ~ 14 dB	~ 4 dB -	~ 4 dB ~ 14 dB	~ 4 dB -	~ 7 dB ~ 14 dB	~ 4 dB -	~ 7 dB ~ 14 dB	~ 4 dB -	~ 7 dB ~ 14 dB	~ 4 dB -	~ 7 dB ~ 14 dB	~ 4 dB -	~ 4 dB -	~ 4 dB -	~ 4 dB -	~ 4 dB -	
Dimensional stability EN ISO 23999	~ 0.15 %	~ 0.1 %	-	~ 0.15 %	~ 0.1 %	-	~ 0.15 %	~ 0.1 %	~ 0.15 %	~ 0.1 %	~ 0.15 %	~ 0.1 %	~ 0.15 %	~ 0.1 %	~ 0.15 %	~ 0.1 %	~ 0.15 %	~ 0.1 %	~ 0.15 %	~ 0.1 %	~ 0.15 %	~ 0.1 %	~ 0.15 %	~ 0.1 %	~ 0.15 %	
Guarantee for private use according to Windmüller warranty conditions	15 years	15 years	15 years	15 years	15 years	15 years	20 years	20 years	20 years	20 years	20 years	20 years	20 years	20 years	25 years	25 years	25 years	25 years	25 years	25 years	25 years	25 years	25 years	25 years	25 years	
Designs	16			6			14		10		4		4		9		9		10		8			2		4
Page	22			24			30		32		34		36		44 – 47		44 – 47		50		52			54		

SYMBOLS

INSTALLATION TYPE



Glue (Dryback)



Click (Connect locking system)



Click (LocTec® locking system)

PRODUCT FEATURES



Resistance to staining



Suitability for chair castors



Suitability for underfloor heating



Suitability for damp areas



Bevelled edge



Real joint



PU surface coating



UV surface coating



Insulation mat Sound-Protect Eco

UTILIZATION CLASSES



Utilization class 23:
Heavy-duty use in the domestic area



Utilization class 31:
Medium use in the commercial sector



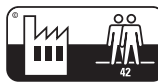
Utilization class 32:
Normal use in the commercial sector



Utilization class 33:
Heavy-duty use in the commercial sector



Utilization class 41:
Medium use in the light industrial sector (vehicular traffic excluded)



Utilization class 42:
Normal use in the light industrial sector

GUARANTEE



15 year guarantee (for private application)



20 year guarantee (for private application)



25 year guarantee (for private application)

windmüller flooring products WFP GmbH

Nord-West-Ring 21

D-32832 Augustdorf

Tel.: +49 (0) 52 37 609 - 0

Fax: +49 (0) 52 37 609 - 309

info@wineo.de

www.wineo.de

Presented by:

Art. no. 20090846 | 12/2016

Stage of life

wineo